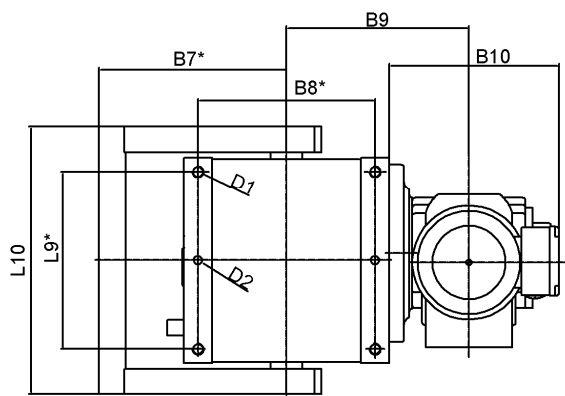


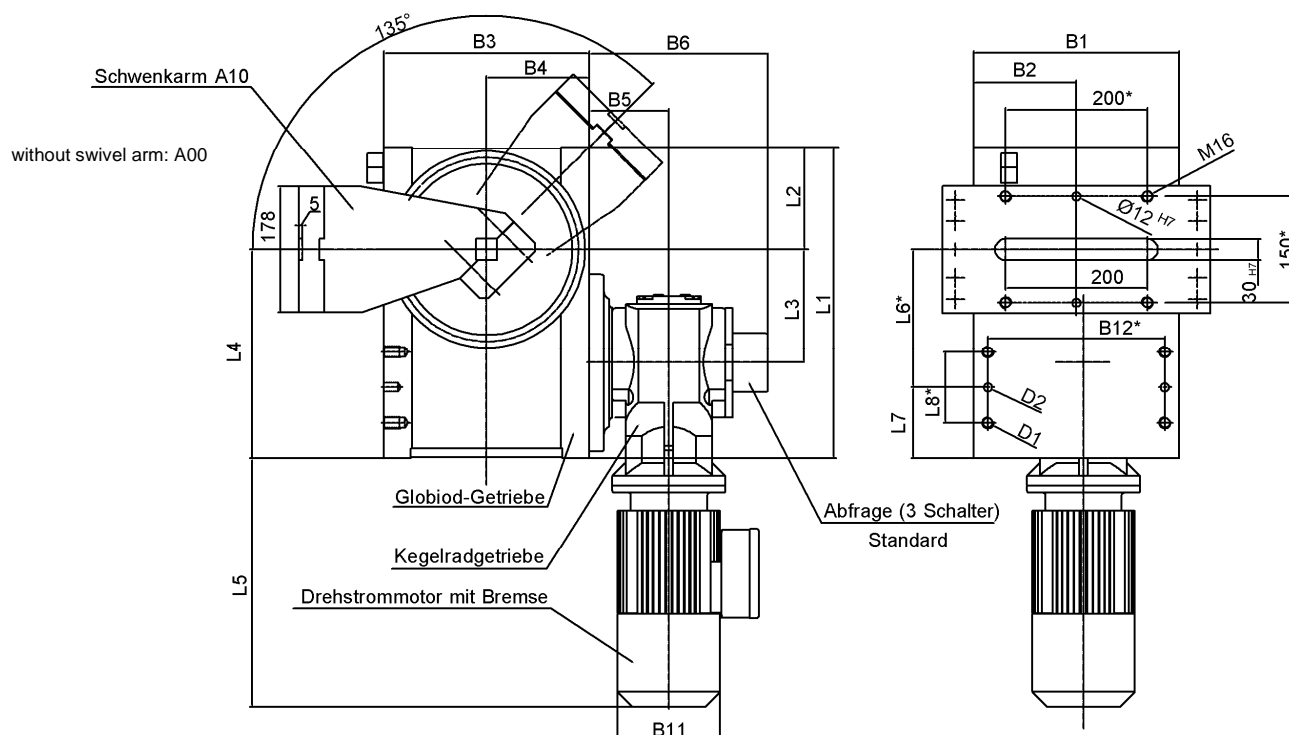
Mammoth Swivel Unit

with globoidal index drive and three-phase a.c. motor

EKM...



**Preliminary
information**



Order example:

EKM 500 A10 120°

Opening angle:

max. 180°

EKM 500: Type
A10: Swivel arm variant
120°: Opening angle

*Tolerance for stud boreholes: ± 0.02 ,
for threaded holes: ± 0.1 .

Type	Torque 0° - 135° Nm	Swivel time at max. 135° opening angle (s)	Weight (kg)	Drive motor					Protection class DIN 40050
				Nominal voltage U Y AC (V)	Duty cycle	Power (kW)	Heat class		
EKM 500	500	2	210	400	100% ED	0.55	B		IP 54
EKM 1000	1000	2	400	400	100% ED	1.10	B		IP 54

Bremse												
Type	Retarding potential Nm	Retarding control	Duty cycle	Retarding torque Nm	B1	B2	B3	B4	B5	B6 ca.	B7 ± 0.1	B8
EKM 500	400	BG	100% ED	5	290	145	290	145	117	315	265	250
EKM 1000	400	BG	100% ED	10	360	180	360	180	151	381	300	310

Type	B9	B10	B11 Ø	B12	D1	D2 H7	L1	L2	L3	L4	L5 ca.	L6	L7	L8	L9	L10
EKM 500	258	244	145	250	M16	12	440	145	160	295	351	195	100	100	250	380
EKM 1000	331	330	197	310	M20	16	545	165	200	380	450	270	110	120	310	450